

“DELETED DOORS” TECHNICAL SPECIFICATIONS

STAGE TECHNICAL REQUIREMENTS

- Black Dance floor dance floor (10 m. wide / 12m. long)
- Black backdrop and at least 3 wings per side
- Space must be clean and not cluttered

SOUND TECHNICAL REQUIREMENTS

Required acoustic system (200 audience):

- Speaker acoustic system appropriate for the space or if outside:
- 2 d&b Q-Sub (40 Hz - 130/100 Hz; 1600 W; 18" speaker)
- 4 d&b MAX (55 Hz - 20 kHz; 1200 W; 15" speaker/2" high frequency speaker) • Monitor speaker
- Sound control console

Cables:

- Connecting cables for acoustic system and stereo bus (XLR) to audio console • Line (XLR) from the monitor speaker to audio console
- Connection to the audio console from the video control computer via 3.5 mm Mini jack

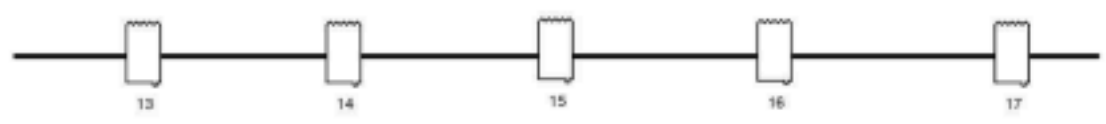
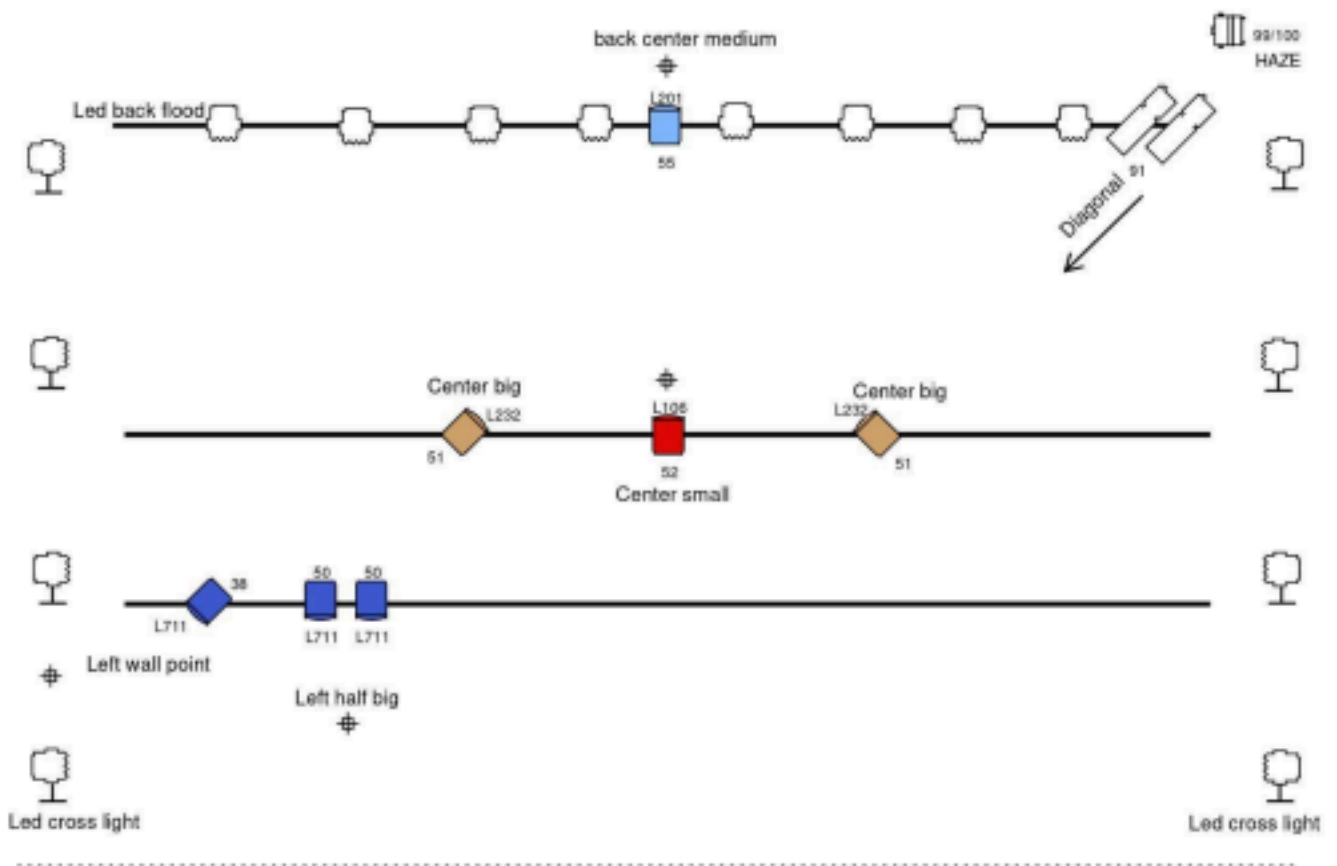
LIGHTING TECHNICAL SPECIFICATIONS

- Lighting fixtures according to the light plan provided below
- Lighting console controlling the aforementioned fixtures (must be capable to support moving fixtures); lighting console grandMA2 or grandMA3;
- Quality electrical installation and connections of lighting fixtures to power • DMX connections between console and fixtures
- Hazer / fog machine

VIDEO TECHNICAL REQUIREMENTS

- Video projector (wide enough for the whole backdrop of the stage) • Connector cable (HDMI)

“DELETED DOORS” TECHNICAL SPECIFICATIONS



DELETED DOORS / AURA
2023 02 07 M.S.

VIDEO