

Main Information:

Cast: 1 performer, 1 musician

Technical Team: 1 stage manager/light technician

Duration: 35 minutes

STAGE REQUIREMENTS:

Width: 10 meters

Depth: 10 meters

Minimum Grid Height: 5 meters

Preferably, the performance should be on a stage without leg curtains, with a black dance floor. If the walls are light-colored, a black box setup will be required.

SET DESIGN:

The only set element is a scenography created with a bicycle wheel, which serves as an anchor point for power extensions and necessary audio cables. The concept is to create a "cable tree" (Speakon or 10/16A extension cables) descending from the grid. Only one of these extensions will be powered for the looper, with 2 XLR cables running through them for the looper.

We require:

Approximately ten 10m minimum 10/16A/Speakon cables to create the "cable tree."

We provide:

A bicycle wheel to hang cables, rigid cable, and fabric to add volume to the cable tree and mounting system

LIGHTING:

The lighting setup for this performance uses both traditional fixtures and LEDs. The lighting plot assumes a grid height of approximately 5 meters and seating for 150. Each fixture requires its own circuit and dimmer. Dimmers must not contain any preset curves.

Lighting Concept:

Lighting consists of:

A ceiling of 12 RGBW LED PAR lights, ideally Martin PAR Rush 2.

A backlight line of 3 PC 2kW fixtures.

A cluster of 5 PAR64 CP62 fixtures.

7 spotlights (profile spots).

1 PAR64 CP60 to illuminate the descending cables.

The performance uses light fog and strobe effects. We can use the house lighting at the front if it covers the entire stage area and will use the standard house entry and service lights.

Lighting Requirements:

On Grid:

Filters:

12 RGBW Zoom PARs with strobe, e.g., Martin PAR Rush 2

4 medium profile spots, e.g., 614SX, with #114 filter

3 short profile spots, e.g., 613SX, with L203 + #114 filter

5 PAR64 CP62 with L504 filter

1 PAR64 CP60 for cable tree lighting, possibly hung in a parrot style

3 PC 2kW with L601 filter

1 full-stage wash (PC or profile) with L601 + #119 filter

1 PC 1kW for the musician's area in the control room

On Floor:

1 DMX-controllable fog machine, e.g., Look Uniq 2.1
We provide:

A computer with EOS software for lighting control.

A Nomad gadget with 2 DMX universes (5-pin). However, the venue's lighting console can be used if it is EOS compatible.

SOUND:

Concept:

The sound setup is fairly standard, with 2 stereo outputs plus subs and monitors. It aims to support a live performance with a looper and audio playback from the control area, ensuring the musician remains as visible as possible.

Sound Requirements:

Main Stereo Output: Suspended in front of the stage: 2 x 12XT speakers + 2 x SB18 subwoofers.

Rear Stereo Output: Suspended at the rear: 2 x 12XT speakers.

Center Monitor (Floor): 1 x 8XT.

Digital Mixing Console in control (2 inputs from audio interface/output, 1 stereo mini-jack input for main and monitor outputs).

Wireless Lavalier Microphone: DPA 4060 with receiver in control.

DI Box + 5m Jack/Jack cable for looper monitor.

2 x Jack-XLR Male Cables for MAIN OUTPUT from audio interface to FOH.

1 x Jack-XLR Male Cable from audio interface to looper.







Direct Sound from cable tree for looper.

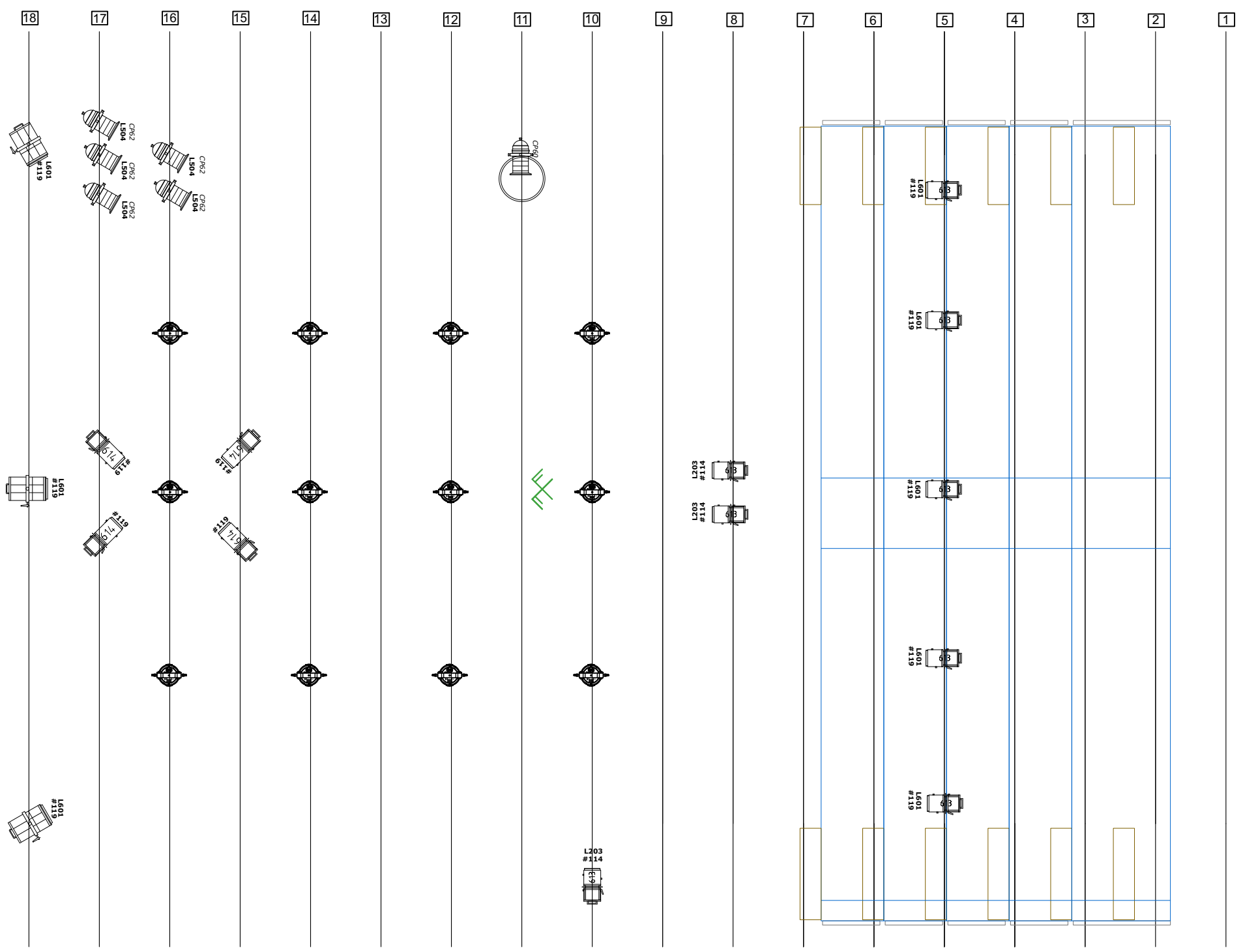
1 x RJ45 Connection from control to stage for MIDI adapter (length to be determined).

(See Wiring Diagram Appendix.)



Légende

-  6 PARS 64
-  8 613SX2
-  3 PC 2KW
-  4 614SX2
-  12 PARS RUSH 2
-  Élément Scéno



ATELIER DE PARIS / CDCN	
DATE : 28/06/24	CREA VILMA.P
IMPRESSION ECHELLE 1/7 SUR A3	
Florian : 06.79.51.75.19	