

OVERHEATED

TECHNICAL RIDER

NUEPIKO Dance Company

Dance performance

Duration: 55 min.

N12

GENERAL INFORMATION

Title: OVERHEATED

Type: Dance performance

Duration: 60 min.

Age rating: N12

Performers on stage: 3

ABOUT THE PERFORMANCE

Overheated" is a NUEPIKO company performance inviting the audience to look at one of the most relevant experiences of contemporary life.

We live in constant haste, in an excess of information, competition, and obligations, so "burnout" becomes an almost inevitable state.

Inspired by personal experiences and what they observe around them, the creators of the performance – Marius Paplauskas, Marius Pinigis, and Andrius Stakelė – explore this theme through the body, movement, and stage expression.

This time they turn away from comic form and instead choose a more sensitive, deeper look at a person's relationship with themselves, their surroundings, and today's world. The performance does not seek to moralize – rather, it encourages us to stop, reflect, and ask ourselves: where am I burning, where am I burning myself out?

It is a self-reflective work intended for anyone familiar with the state of "burnout" or concerned with the social, political, and ecological "fires" around us.

CREATIVE TEAM

Concept authors: Marius Paplauskas, Marius Pinigis, Andrius Stakelė

Choreography and dance: Adrian Carlo Bibiano, Marius Pinigis, Andrius Stakelė

Composer: Andrius Stakelė

Lighting scenography: Vladas Šerstabojevas

Lighting designer: Renaldas Bartulis

Troupe Operations Coordinator: Vaida Virbickaitė

Head of performance communication: Agnė Pinigienė

1. STAGE REQUIREMENTS

- Minimum stage area – 8 m x 8 m + audience space.
- The floor must be even, clean, and safe.
- The company uses its own dance floor.
- The performance can also be presented in non-traditional spaces.
- The exact stage layout is coordinated according to the specific venue and the technical drawing.

2. AUDIENCE LAYOUT

- The audience is seated around the dance area on all four sides.
- The number of seats depends on the venue and seating possibilities.
- If needed, risers may be used for several rows.
- Final seating arrangement is agreed on site.

3. LIGHTING REQUIREMENTS

- 329 HPC CP/92 230V - 4 units with L201 and barn door.
- 329 HPC CP/92 230V - 6 units with L232 and barn door.
- CE Source 4 - 25/50 Zoom HPL 750W/115V - 6 units.
- HV1000 P2/12 230V - 1 unit with barn door.
- PAR 64 CP/61 240V - NSP - 3 units O/W.
- PAR 64 CP/61 240V - NSP - 2 units L106.
- PAR 64 CP/61 240V - NSP - 1 unit L119.
- PAR 64 CP/61 240V - NSP - 1 unit L201.
- Total number of fixtures - 24 units.
- A hazer is used in the performance.

4. SOUND REQUIREMENTS

- A professional stereo sound system is required to ensure clear, undistorted sound throughout the space.
- The system must be powerful enough for a live performance.
- At least one subwoofer is required.

5. SOUND CONNECTION AND CONTROL

The performer uses their own audio interface and controls all sound themselves.

- The venue must provide 2 x line inputs (left / right) into the sound system.
- Connections - 6.3 mm TRS (balanced jack) or via DI boxes.
- If needed, DI boxes are provided by the organiser.
- All music and microphones are controlled by the performer.
- Additional FOH sound control is not necessary unless agreed in advance.

6. STAGE SETUP

- The performer's setup (computer and audio interface) is placed on stage, in one of the corners.
- All equipment is placed directly on the floor.

7. ELECTRICITY

- Standard 230 V power supply is required.
- At least 3 power sockets must be available at the performer's position on stage.

8. TECHNICAL COORDINATION

- Exact lighting, sound, and spatial solutions are coordinated individually with the venue technicians, taking into account the possibilities of the specific space.
- A hazer is used in the performance, so fire alarm and ventilation issues must be coordinated in advance.

9. DRESSING ROOM

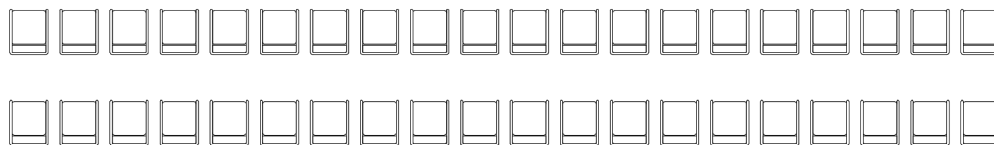
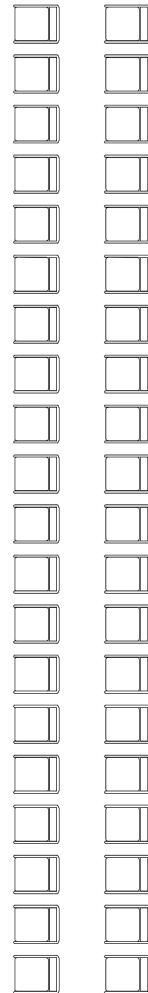
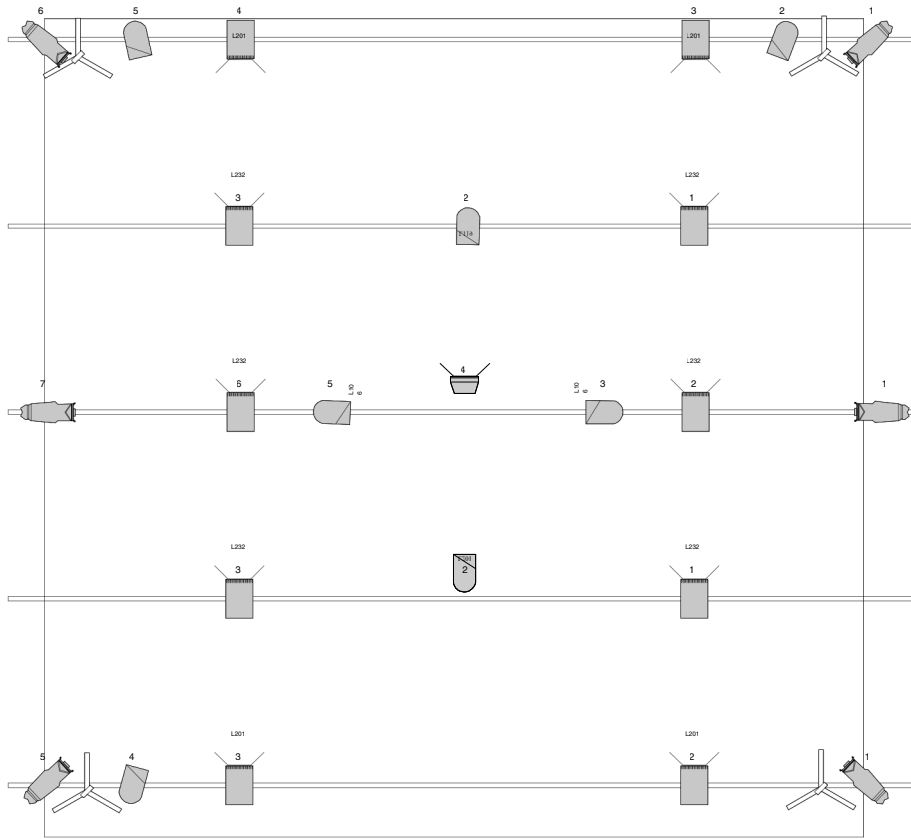
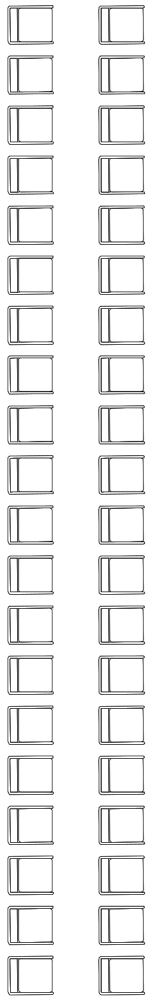
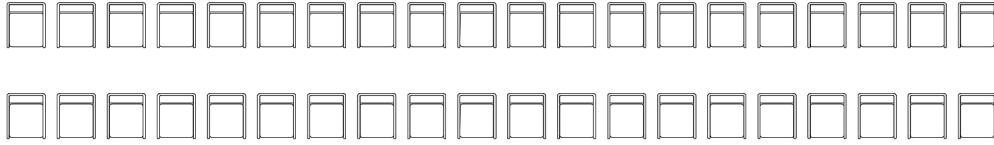
- 1 dressing room is required.
- It is used by 5 people - 3 performers, the lighting operator, and the dissemination coordinator.
- If possible, please provide a mirror, drinking water, and light snacks.

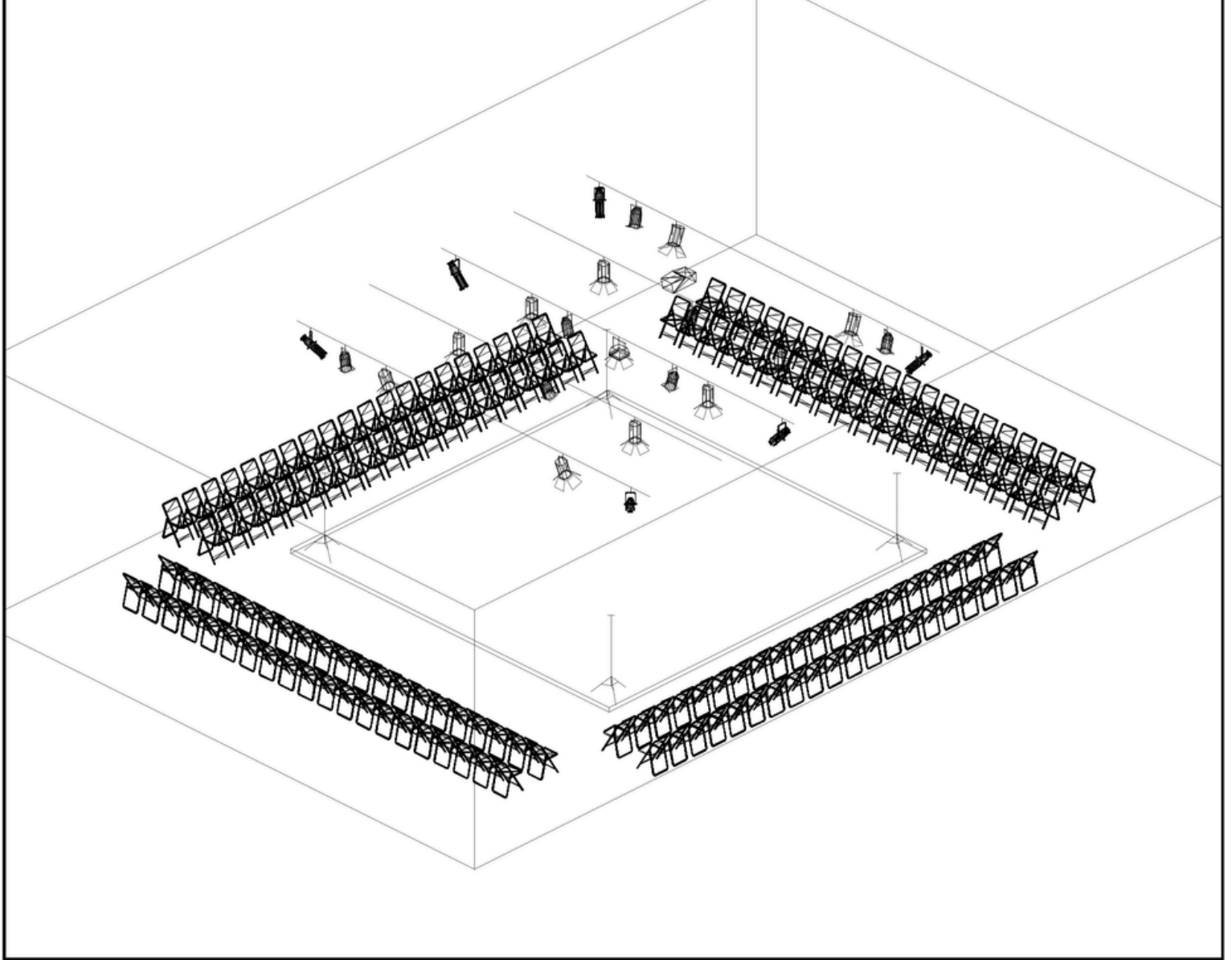
10. CREW AND LOGISTICS

- 5 people travel with the company - 3 performers, the lighting operator, and the dissemination coordinator.
- Local assistance with unloading, stage preparation, setting up audience chairs, and loading out after the performance is appreciated.
- Vehicle access to the door is required.
- A ramp would be a major advantage.
- Heavy and larger-scale set elements are used in the performance.

TECHNICAL STAGE PLAN

HAZER





Instrument Count

(All Layers)

Type	Lens	Lamp	Fixture Options	Count	Color
329 HPC 329 HPC CE		CP/92 230V	N/A N/A N/A	4	L201 & BD
Source 4 - 25/50 Zoom H		CP/92 230V HPL	N/A N/A N/A	6	L232 & BD
V1000 PAR 64 PAR 64		750W/115V	N/A N/A	6	O/W
PAR 64 PAR 64		P2/12 230V		1	BD
		CP/61 240V - NSP		3	O/W
		CP/61 240V - NSP		2	L106
		CP/61 240V - NSP		1	L119
		CP/61 240V - NSP		1	L201
				24	

NUPEPIKO

DANCE COMPANY

CONTACTS

- **Troupe Operations Coordinator:** Vaida Virbickaitė | +370 693 01628

- **Responsible technician contact:** Renaldas Bartulis | +370 636 07 602

- **Responsible sound technician contact:** Andrius Stakelė | +370 671 73361

- **E-mail:** Vaida.dirba@gmail.com