



FAIR DISTANCE

TECHNICAL RIDER

NUEPIKO Dance Company

Dance performance

Duration: 55 min.

N-12

GENERAL INFORMATION

Title: FAIR DISTANCE

Type: Dance performance

Duration: 45 min.

Age rating: N-12

Performers on stage: 2

ABOUT THE PERFORMANCE

Connection and separation, attachment and letting go, closeness and the growing distance again – these are dichotomies that accompany a person throughout life among other people. In flow, rush, short-term relationships, empty conversations, memories, grievances, transatlantic flights, longing, and reconciliation, the distance between oneself and another constantly changes, continuously creating and recreating human connection, exhausting us and igniting hope.

“Fair Distance” is a dialogue of two bodies and personalities unfolding through movement about what keeps our whole social world constantly turning: immediacy and detachment, dependence and liberation, an all-encompassing duality in which connection is impossible without distance, and distance is born within connection.

The performance invites the audience into a space of self-reflection, offering no direct answers, but raising the question of how to maintain a distance that creates and nurtures us and our relationships, rather than destroys them.

CREATIVE TEAM

Concept authors: Arūnas Mozūraitis and Adrian Carlo Bibiano

Dance: Adrian Carlo Bibiano and Marius Pinigis

Composer: Andrius Stakelė

Lighting designer: Renaldas Bartulis

Troupe Operations Coordinator: Vaida Virbickaitė

Head of performance communication: Agnė Pinigienė

Co-production partner: Kaunas City Chamber Theatre

1. STAGE REQUIREMENTS

- The performance can be presented in two spatial formats, depending on the possibilities of the venue.
- Variant A – frontal stage (priority option).
- Variant B – spatial arrangement, when the audience is seated around the performance area.
- The final stage and sound arrangement is adapted to the specific venue.
- The floor must be even, clean, and safe.
- The exact stage layout is adapted to the specific venue and technical drawing.

2. AUDIENCE LAYOUT

- Variant A – frontal layout: the audience is seated facing the stage.
- Variant B – spatial layout: the audience is seated around the performance area.
- The final audience layout is agreed on site according to the possibilities of the venue.

3. LIGHTING REQUIREMENTS

- PAR64 MFL – 12 units.
- LED RGBWA PAR – 12 units.
- 1000 W spotlight, fresnel – 16 units.
- 650 W Spotlight PC – 2 units.
- Filters and positions:
 - L009
 - L201
 - ground
- The lighting scheme and specific fixture layout are provided in the technical stage plan.
- The exact lighting solution is coordinated with the venue technicians according to the available equipment.

4. SOUND REQUIREMENTS

- Variant A – frontal stage (main option):
 - A professional stereo FOH system is required.
 - The sound must be clear and evenly distributed to the audience.
 - A subwoofer is recommended but not mandatory.
- Variant B – spatial:
 - A 4-speaker system is required.
 - The speakers are placed in the four corners.
 - The sound must be distributed evenly from all sides.

5. SOUND CONNECTION AND CONTROL

- The performer uses live sound and playback.
- The performer's position can be:
 - on stage, or
 - at the sound control position.
- The final decision is made on site, according to the venue.
- The venue must provide a stereo sound input (left / right).
- Connection can be:
 - 3.5 mm stereo mini-jack, or
 - 6.3 mm TRS (balanced jack) / DI boxes.
- The specific connection method is agreed on site.
- The same stereo input and connection logic apply to both variants.

6. ELECTRICITY

- Standard 230 V power supply is required.
- At least 3 power sockets must be available at the performer's stage position.

7. TECHNICAL COORDINATION

- The exact lighting, sound, and spatial solutions are coordinated individually with the venue technicians, taking into account the possibilities of the specific space.
- The performance can be presented in two sound layout variants, so the final technical solution is adapted to the specific venue.
- The sound connection method and the performer's position are agreed on site.
- A soundcheck must be carried out before the performance.

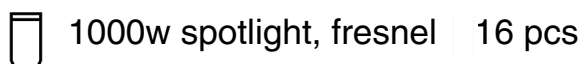
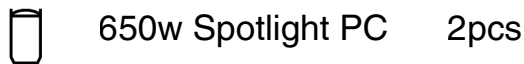
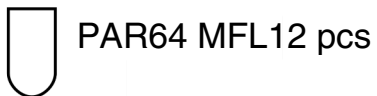
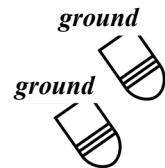
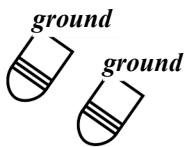
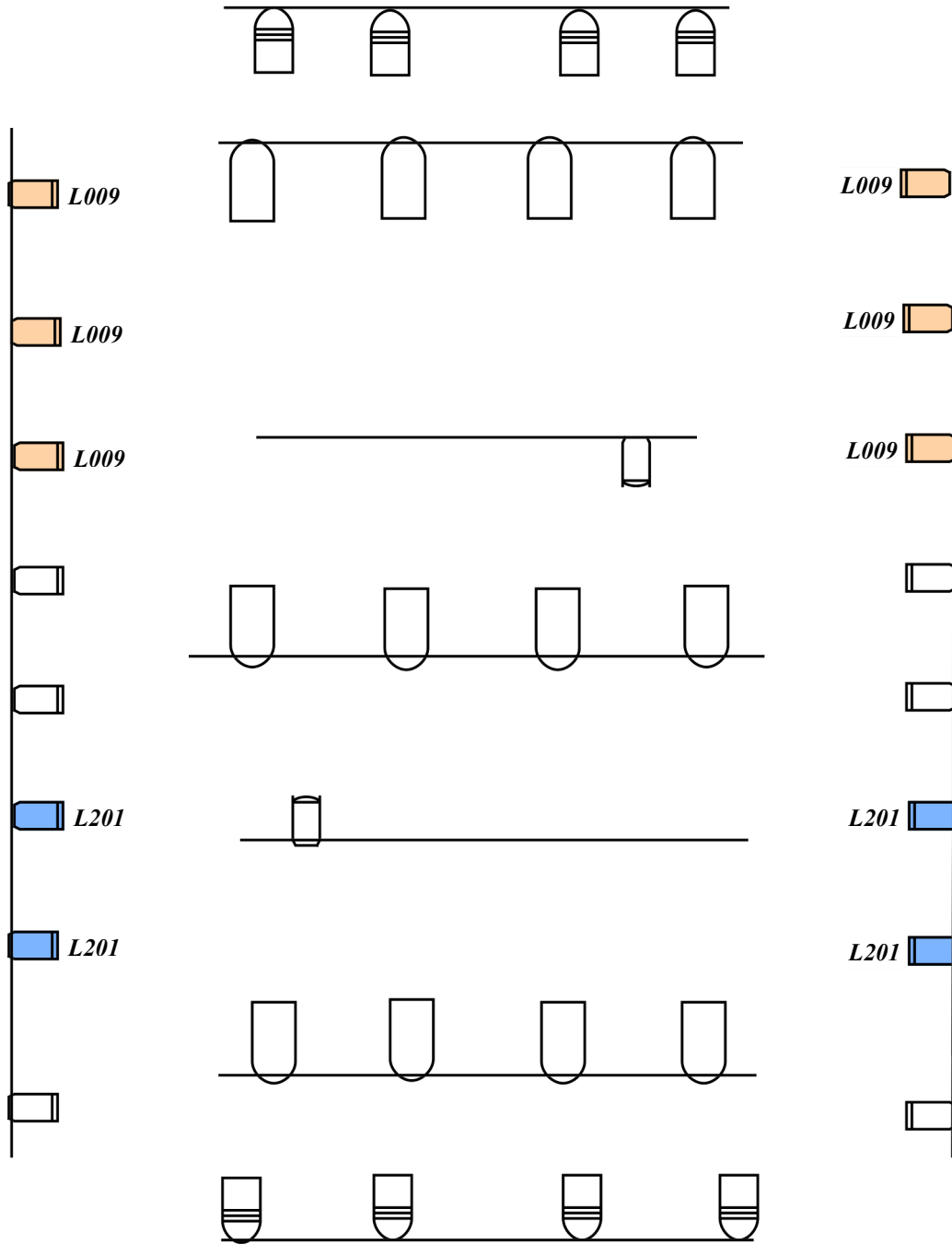
8. DRESSING ROOM

- 1 dressing room is required.
- It is used by 5 people – 2 performers, the lighting and sound operator, and the Troupe Operations Coordinator.
- If possible, please provide a mirror, drinking water, and light snacks.

9. CREW AND LOGISTICS

- 5 people travel with the company – 2 performers, the lighting and sound operators, and the Troupe Operations Coordinator.
- Local assistance with unloading, stage preparation, setting up audience chairs, and related tasks is appreciated.
- Vehicle access to the door is required.
- A ramp would be a major advantage.

TECHNICAL STAGE PLAN



Kaunas City Chamber Theatre

FAIR DISTANCE

NUPEIKO

DANCE COMPANY

CONTACTS

- **Troupe Operations Coordinator:** Vaida Virbickaitė | +370 693 01628
- **Responsible technician contact:** Renaldas Bartulis | +370 636 07 602
- **Responsible sound technician contact:** Andrius Stakelė | +370 671 73361
- **E-mail:** Vaida.dirba@gmail.com