

TECHNICAL RIDER

for

A DUET

by Dovydas STRIMAITIS

technical director

Lisa M. Barry

contact information

thelisabarry@gmail.com

+353 86 062 5998

general contact information

contact@dovydas-strimaitis.com

+33 7 66 61 55 02

www.dovydas-strimaitis.com

THE PIECE

A Duet is a 45-minute duet for stage. The 2 performers never leave the stage, there are not costume changes. Some sound is recorded during the show and plated back at a later point, the rest is playback. The piece can be performed on its own or as part of a shared-evening program.

TRAVELING TEAM

The traveling crew includes 5 people: the choreographer, two dancers, the lighting designer/technical director, and the sound engineer.

PERFORMANCE LOCATION

The duet is performed in a theatre setting, mostly in a black-box type of stage, but different venue proposition are possible. However, it should be equipped with professional lighting and sound systems.

DIMENSIONS

The minimum dimensions of the stage are 9 m length × 10 m width.

Wings and backdrop are generally not needed, if anything, the backdrop should be black. To be discussed with the company.

FLOOR

Black dance marley must cover the floor of the stage.

White tape to mark the positions on the floor should be provided by the hosting venue.

LIGHTS

To present a quality performance we need adequate lighting as detailed below. The following is the typical hang for our performance.

Company is open to discussing and making substitutions to minimize the need for rentals insofar as such substitutions do not compromise the integrity of the production.

A pre-hang is requested prior to company load-in.

At least six weeks prior to the performance, the hosting venue should submit to the company all technical specifications of the space, including house lighting plot, number and type of instruments available, number of dimmers and control console type.

Minimal requirements:

- PAR64-MFL × 20
- Foot lights (pin spots are ideal) × 10
- Robert Juliat 613 SX @ 1kw/1.2kw or equivalent × 7
- Robert Juliat 329 HPC @ 2kw/2.5kw or equivalent × 1
- Robert Juliat 310 HPC @ 1kw/1.2kw or equivalent × 17
- Boom stands × 2
- Iris × 1

See also the attached lighting plot (example from the premiere).

SOUND

Company travels with some sound equipment of its own, notably for recording and replaying live sound effects.

Minimal requirements from the venue are:

- 2 long XLR cables to connect the stereo microphone and the audio interface,
- appropriate cables to connect the audio interface and the stereo sound system (outputs 1 - 2 = XLR (plug) or TRS jacks (socket)),
- a stereo sound system (minimum 2 x main loudspeakers + 2 monitors onstage),
- 1 x computer with ABLETON (to run the sound and automation).

See also the attached sound plot.

SCHEDULING

Day 1 – travel of the company

Day 2 – montage and rehearsal day

Day 3 – show day

...

FACILITIES AND CREW

The company requires a private dressing room with a mirror, electricity, running water, a private toilets and a shower.

A separate rehearsal space should be provided for the rehearsal during the montage hours (day 2).

An iron must be provided. A washing machine should be made available. If more than one show is scheduled, a costume maintenance person is required.

The floor of the stage must be mopped before every show and before rehearsals.

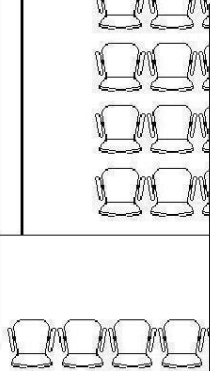
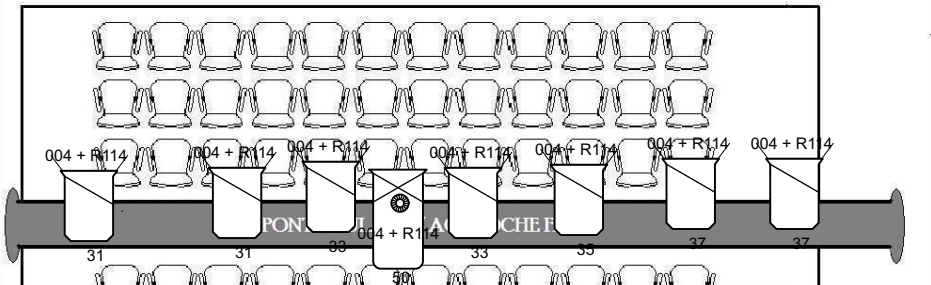
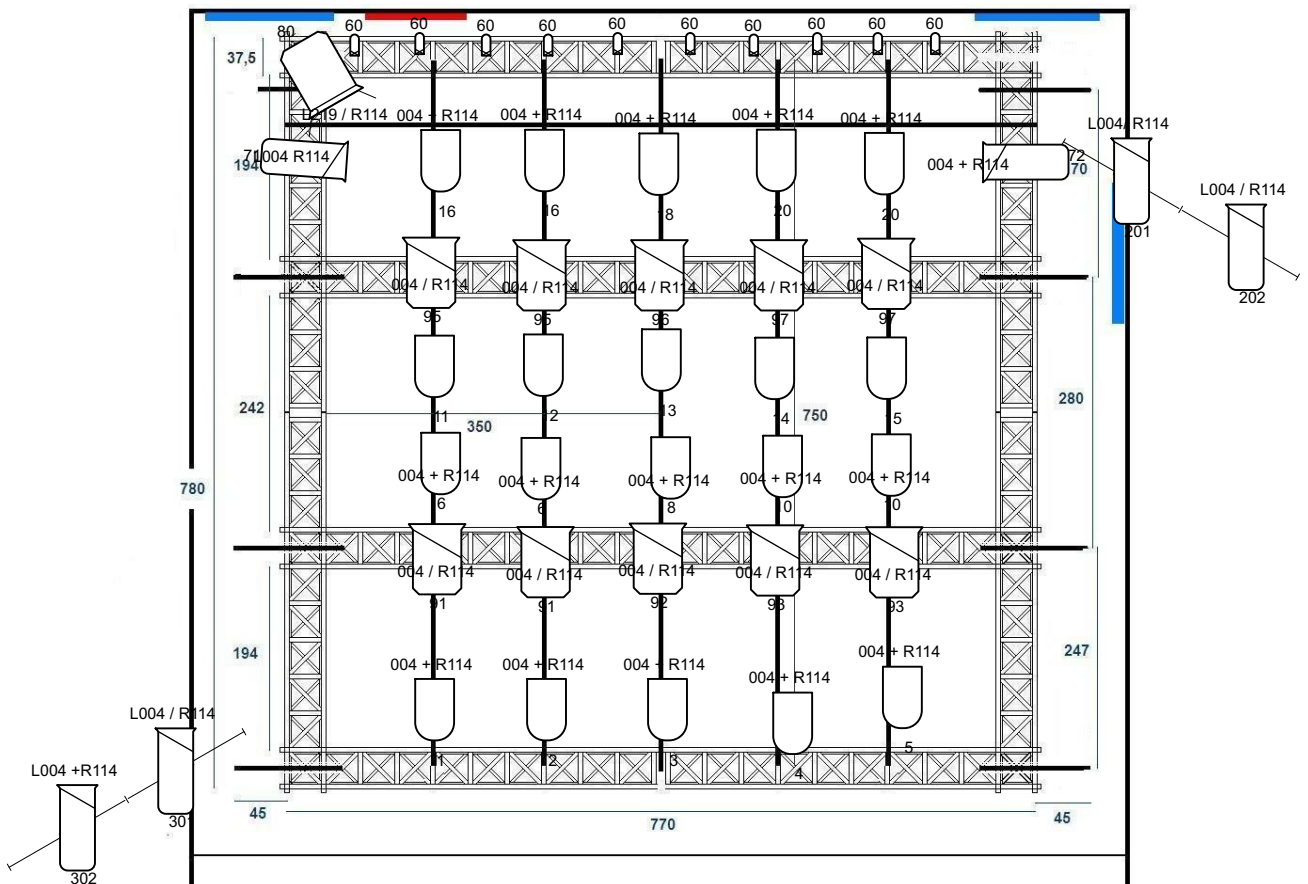
Drinking water must be provided at all times – either in bottles, or from water fountain, or as drinkable tap water.

A minimum of **2 lighting technicians** must be available for the lighting installation and focus. A minimum of **1 sound technician** must be available during technical set up.

At least one technician thoroughly familiar with the sound and lighting equipment of the theatre should be available during all the rehearsals and shows.

VIDEO

Video recording of the piece: https://youtu.be/UvGxaOIN_OQ



USITT 12in 2BarnDoor

Tris

Static Accessory

USITT PAR64-MFL @ 1kw

USITT PAR MR-16
Birdie-VNSP @ 42w

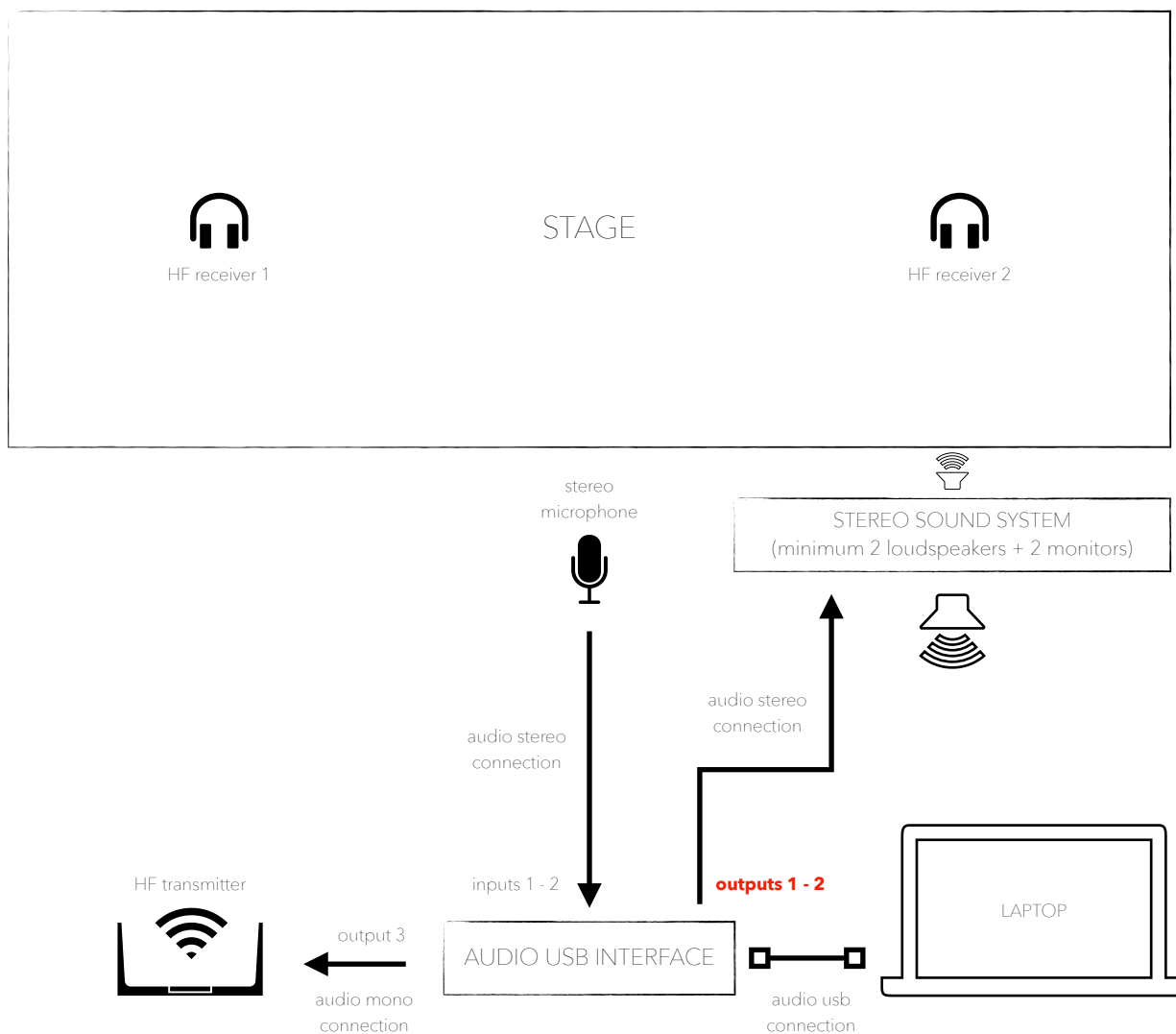
Robert Juliat 713 SX @
2kw/2.5kw

Robert Juliat 613 SX @
1kw/1.2kw

Robert Juliat 329 HPC @
2kw/2.5kw

Robert Juliat 310 HPC @
1kw/1.2kw

Light

DISPOSITIF SON - A DUET - DOVYDAS STRIMAITIS**NOTES**

material requested:

- 2 long XLR cables to connect the stereo microphone and the audio interface
- appropriate cables to connect the audio interface and the stereo sound system (**outputs 1 - 2 = XLR (plug) or TRS jacks (socket)**)